

VIZN

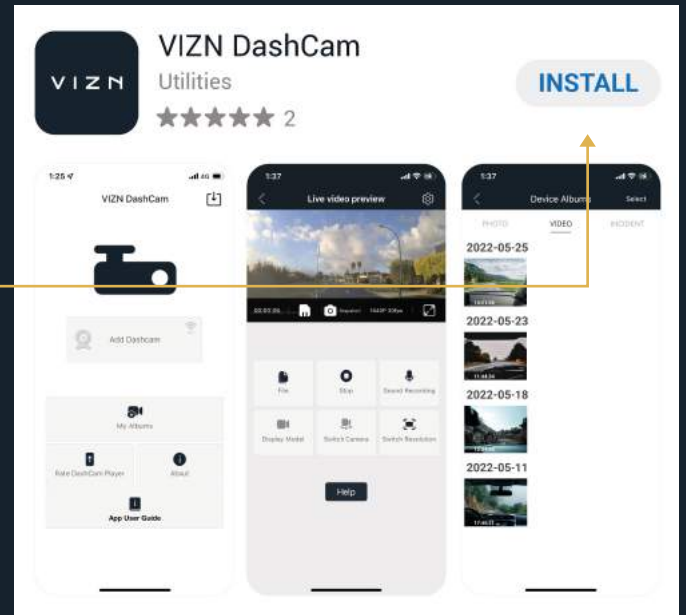
DASHCAM APP USER GUIDE



Important Note: Do not operate app whilst driving

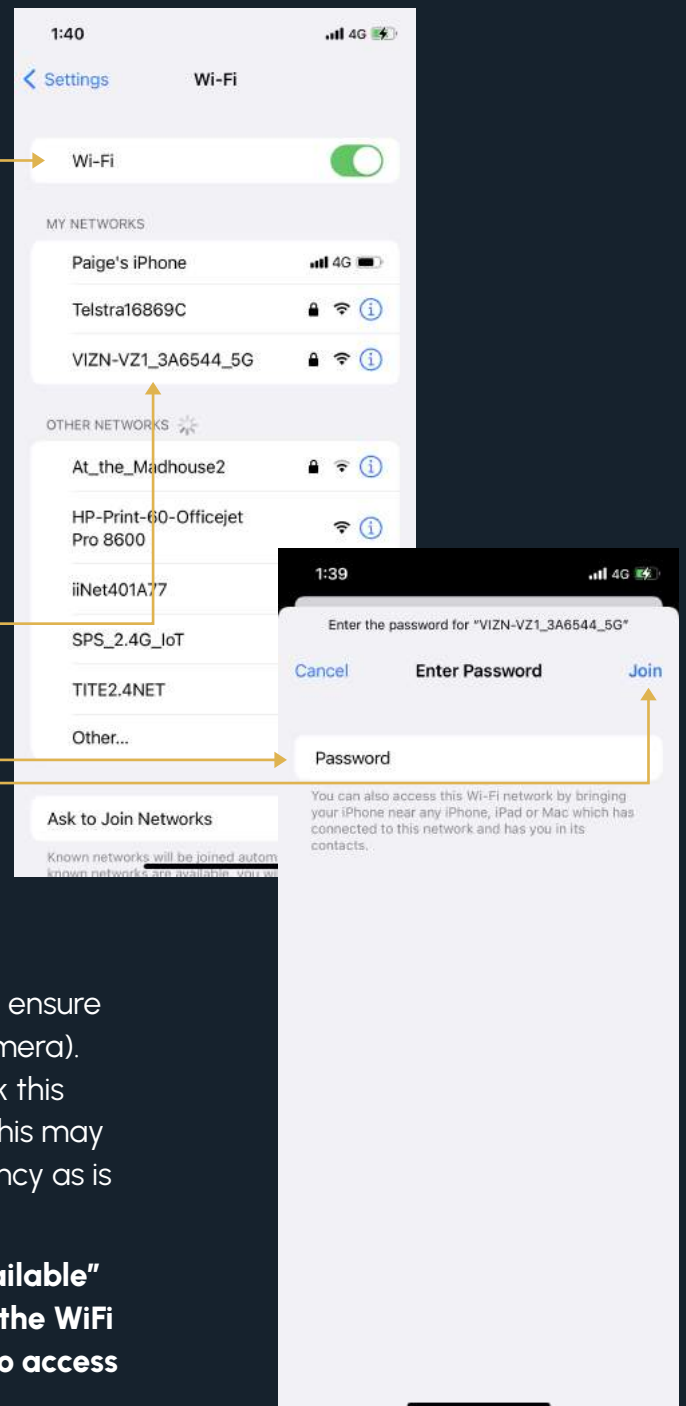
1. Downloading the VIZN DashCam app

1. Open the **app store** (Google Play for Android and APP Store for IOS)
2. Search "**VIZN DashCam**"
3. Select the **download/install** option



2. How to connect to the VZ1

1. Turn the vehicle to the **on position**. (You may be required to start the vehicle if the battery voltage has dropped tripping the battery protection)
2. The WiFi button will illuminate blue when turned on. If not automatically on, turn on the camera's WiFi by pressing the **WiFi button** on the side of the camera
3. **Turn on** the mobile phones WiFi
4. Open the WiFi settings and search for "**new networks**" *
5. Select the **VIZN_VZ1-xxxxxxx**
6. Enter the default password – Default password **12345678**
7. Click **Connect/Join**



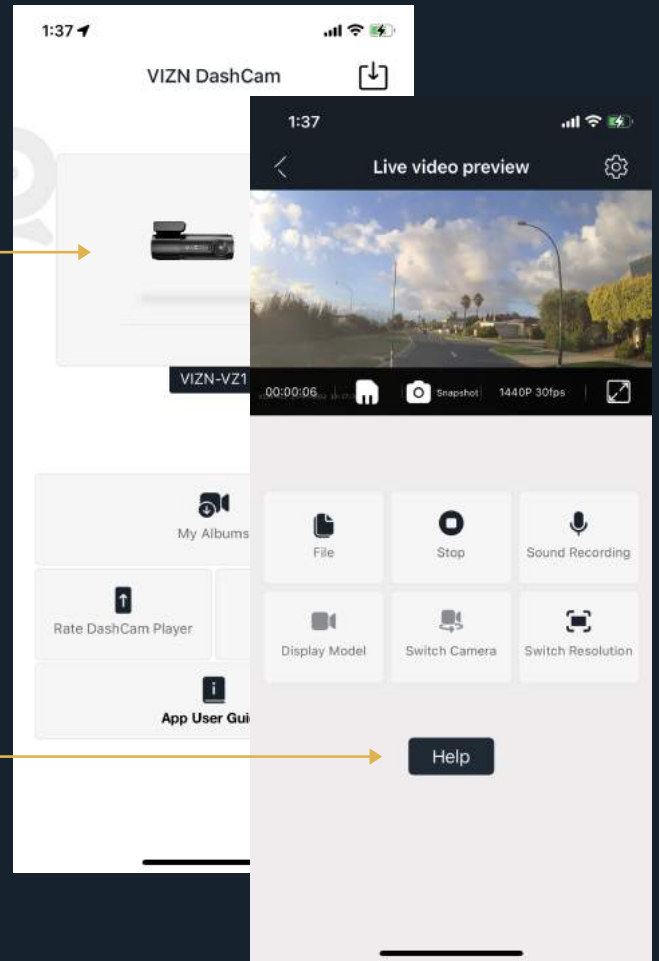
*Should the VIZN_VZ1- xxxxx WiFi network not display ensure the BLUE WiFi light is illuminated on the VZ1 (side of camera). Should this be on and still does not display, double click this button to turn the WiFi network on the VZ1 to 2.4GHz, this may be required as not all phones operate on 5GHz frequency as is the standard setting of the VZ1.

NOTE – A message stating "Internet may not be available" may display, should this occur please select to keep the WiFi connection. Failure to do with will result in inability to access the VZ1.

3. Accessing the VZ1 via the VIZN DashCam app

1. Ensure you are **connected** to the VZ1 via WiFi. See step 2 if required
2. **Open** the VIZN DashCam app. If you are connected to the VZ1 you will see the camera displayed on the home page of the APP
3. Select the **camera image** to connect to the camera

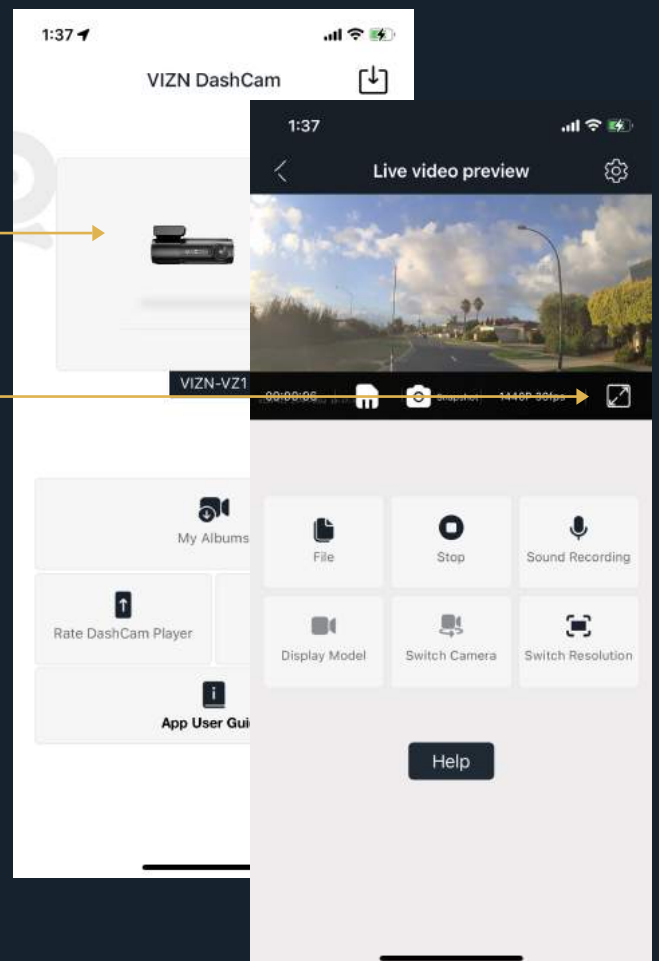
NOTE – Once you access the camera it will automatically display the live footage. This will also provide the options to access the recorded files, take an image and access the settings. If live does not display, click the help button to receive instructions on turning mobile data off for VIZN DashCam app.



4. View live footage

1. Ensure you are **connected** to the VZ1 as per steps 2-3.
2. Select **the camera** on the app home page.
3. App will open to live view. Press **the maximise icon** in the bottom right-hand corner of the live view to open full screen.

Important Note: Do not operate app whilst driving.



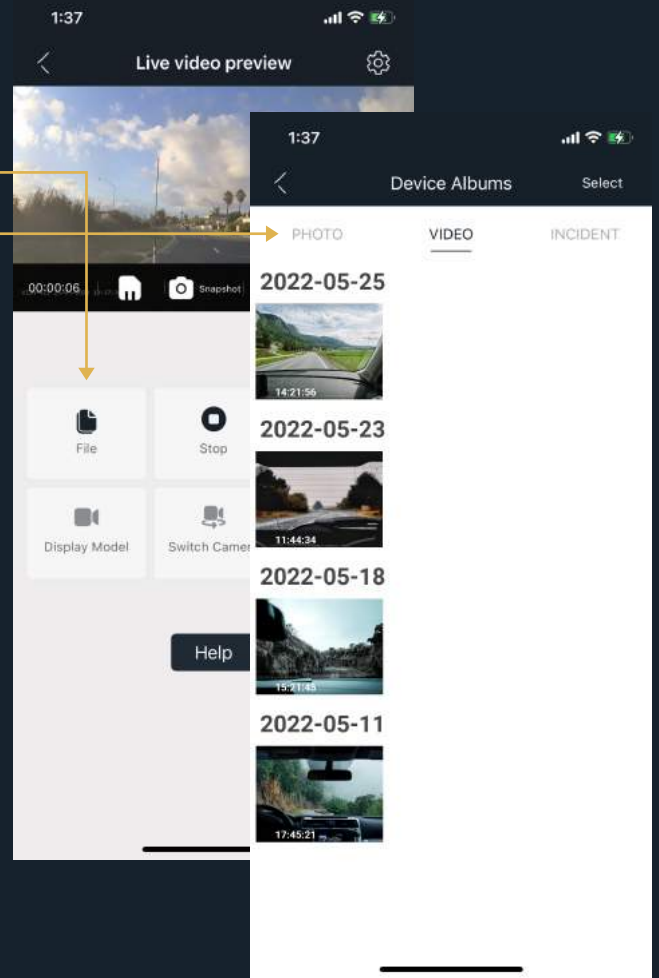
5. View historical footage

1. **Connect** to the VZ1

2. Select **SD Card** (android) or **File** (IOS)

3. Select the **desired file**:

- **PHOTO** – Any still images taken manually
- **VIDEO** – All loop recording images from driving AND parking mode
- **URGENT** (android) or **Incident** (iOS) – Video's recorded and locked due to an activation or the G-Sensor.



6. Download recorded video/s in full

1. **Connect** to the VZ1

2. Access the **recorded files**, refer step 5

3. Press the **"Select"** option in the top right corner

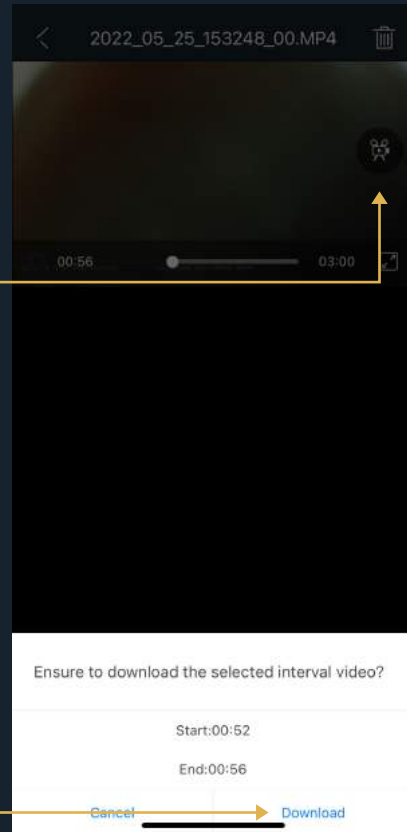
4. Press the **small circle** and tick in the top right corner of the desired video/s you wish to download

5. Press **DOWNLOAD** in the bottom left-hand side of the screen



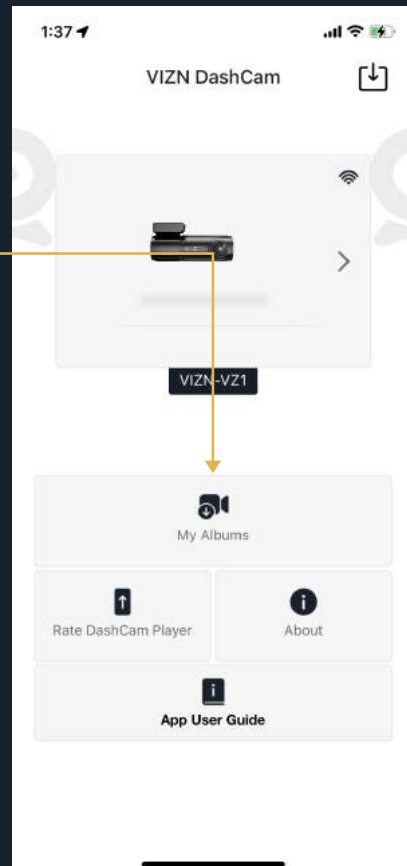
7. Snip and download video

1. **Connect** to the VZ1
2. Access the **recorded files**, refer step 5
3. **Open** the desired video
4. Press the **small snip video icon** at the point in the video you wish to start and then again at the point you wish to end and click
5. Click **download** when prompted



8. Accessing downloaded footage

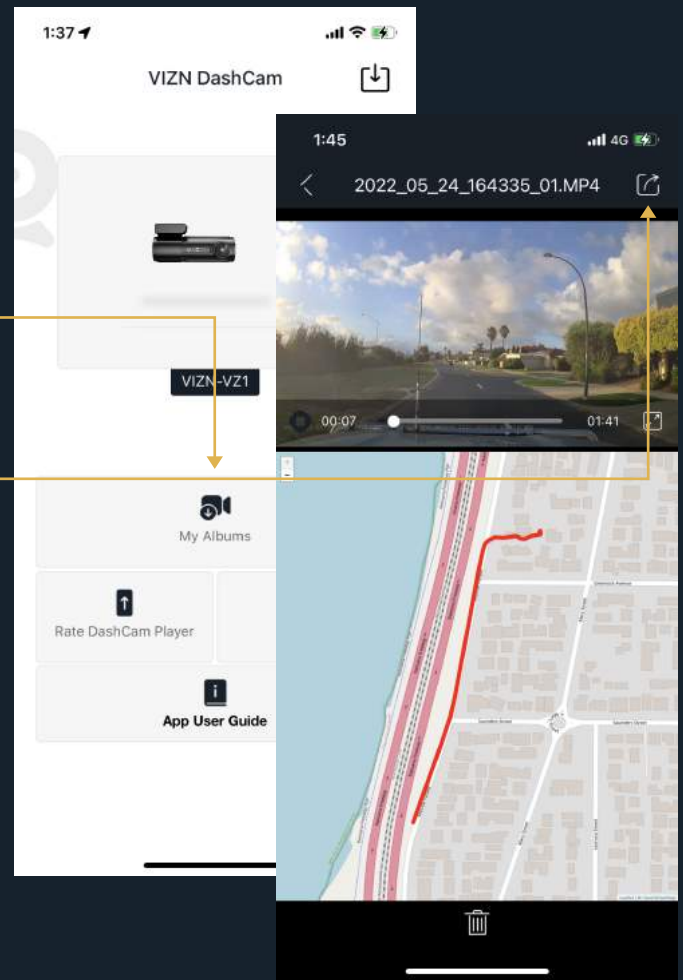
1. **Open** the VIZN DashCam app
2. Select the **Downloaded Video** (android) or **My Album** (iOS) option from the app home screen. iOS will automatically download to phone gallery. Media can be downloaded to Android gallery from here.
3. This will display **all downloaded** PHOTO, VIDEO and UREGNT VIDEO footage that has been downloaded to the mobile phone. You can view this footage without being connected to the camera.



9. Accessing GPS playback footage

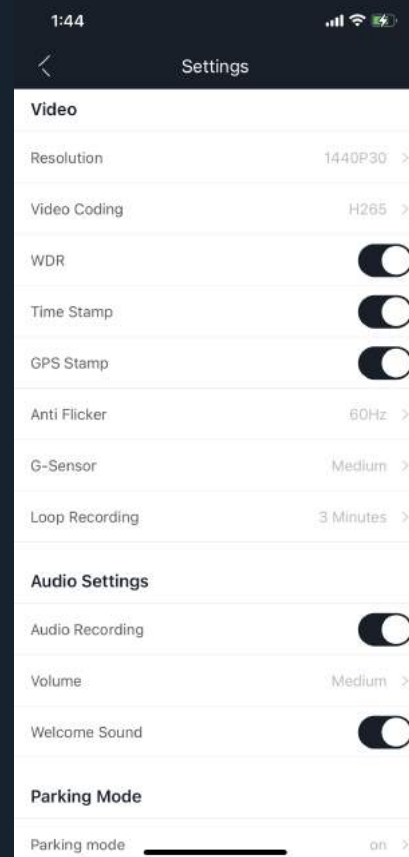
1. **Open** the VIZN DashCam app & download desired video
2. Return to home screen and select **Downloaded Video** (android) **My Album** (iOS) option from the app home screen
3. **Select** video
4. Use the **share icon** in the top right to share footage to email, messages, or social media

Important note – If mobile data has been turned off for the VIZN DashCam app it will need to be turned back on in the app settings to download the map and share footage.



10. Settings

- **Resolution** setting is used to change the video quality. Lower quality video will use less memory
- **Video** coding is used to change the video code. Recommended to leave as factory
- **WDR** is to turn on or off wide dynamic range. WDR can help improve the clarity of the picture in varying lighting conditions
- **Time stamp** will turn on or off the time stamp on the video recording
- **GPS stamp** is to turn on or off the GPS coordinates & speed on the video recording
- **Anti flicker** can be changed from 50Hz to 60Hz if experiencing flicker in video
- **G-sensor** will change the sensitivity of the g sensor
- **Loop recording** change the length of each recorded video
- **Audio recording** will turn recording of sound in the cabin on or off



- **Volume** will turn up or down the volume of the dash camera prompts

- **Welcome Sound** turn on or off start up noise

- **Parking mode:**

1. **On** – When parking mode is on the camera will record in 5 FPS when the car is turned off.

2. **Off** – When parking mode is off, the camera will turn off when the car turns off.

3. **Standby** – When camera is set to standby the camera will stop recording when the vehicle is turned off. The camera will start recording when the g-sensor is triggered. Disclaimer: There is no guarantee the g-sensor will capture incidents.

- **Parking mode time** – the maximum time the camera will record in parking mode before turning itself off. 24 hours will record continually or until the battery cut off is tripped

- **Speed unit** – set the desired unit of speed

- **Time setting** enforces time zone setting

- **Time Zone** set desired time zone

- **GPS information** displays status of the GPS connection

- **Vehicle registration** set vehicle registration to display in video

- **SD card storage** Shows how much memory is used (when full the camera will record over the oldest footage)

- **Formatting SD card:** Formatting SD card will delete everything on the card. Any new SD card will need to be formatted before it will record video. SD card can also be formatted by holding down the wifi button for 10 seconds until the camera beeps

- **Factory default** will restore factory settings

- **Wifi** change wifi password

- **About** to check camera firmware

